


# CMI Brass Audition - Bass Clef

1 

2 



3 



4 



Allegretto

5 



# CMI Brass Audition - Bass Clef

Allegro

6

*mf*

7

*p* < > < > < > < > < > < >

< > < > < > < > < > < >

8

*f*

Allegro

9

*p*

*p*

*f* *p*

# CMI Brass Audition - Bass Clef

10 *Allegretto*

*p*

*f*

11 *mf espr.*

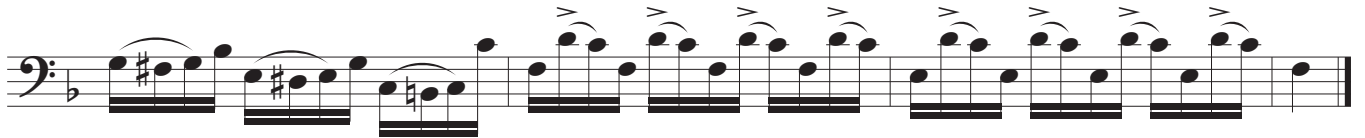
*mf espr.*

12 *dolce*

*dolce*

# CMI Brass Audition - Bass Clef

13



14

