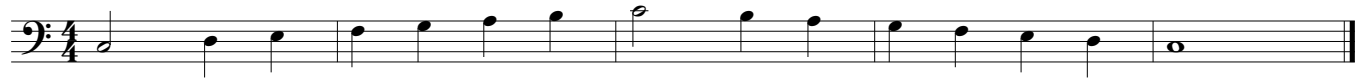


# Territorial Youth Band

## Brass Audition Music B.C.

To be considered for placement in Celebration Brass, please video record lines 1-7:

① C Major Scale - Allegro ♩ = 120



② God is so good - Moderato ♩ = 100



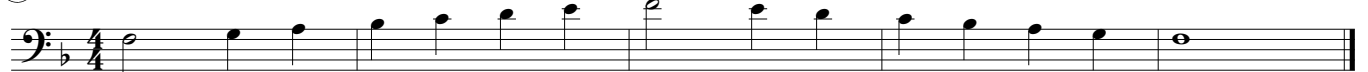
③ Joy in The Salvation Army - Allegro ♩ = 116



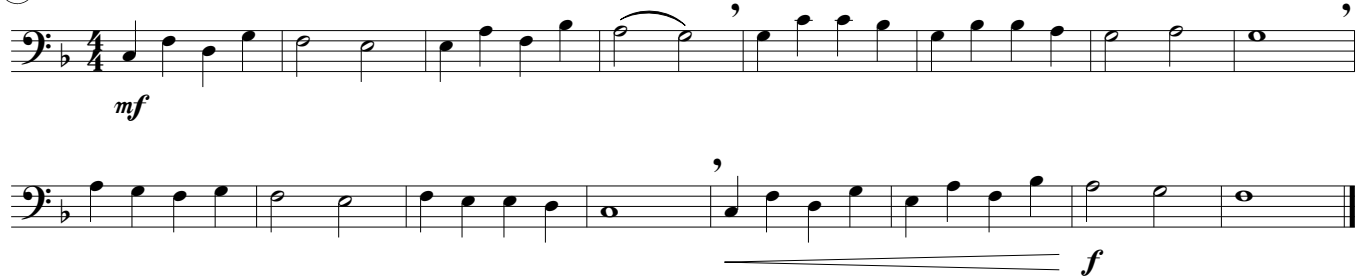
④ D♭ Major Scale - Allegro ♩ = 120



⑤ F Major Scale - Allegro ♩ = 120



⑥ Rachie - Allegro ♩ = 112



⑦ March - God's Children - Allegro ♩ = 120



# Territorial Youth Band

## Brass Audition Music - 2

To be considered for placement in Triumph Brass, please video record lines 8-12:

8) A<sup>b</sup> Major Scale - Allegro ♩ = 120

Musical notation for A<sup>b</sup> Major Scale in bass clef, 4/4 time, Allegro tempo (♩ = 120). The scale starts on A<sup>b</sup> and ends on A<sup>b</sup>.

9) E Major Scale - Allegro ♩ = 120

Musical notation for E Major Scale in bass clef, 4/4 time, Allegro tempo (♩ = 120). The scale starts on E and ends on E.

10) March - Cairo Red Shield - Allegro ♩ = 116

Musical notation for March - Cairo Red Shield in bass clef, 2/4 time, Allegro tempo (♩ = 116). The piece features a dynamic marking of *ff* and includes slurs and accents.

11) Just as I am - Andante ♩ = 72

Musical notation for Just as I am in bass clef, 3/4 time, Andante tempo (♩ = 72). The piece features dynamic markings of *p*, *mf*, *f*, *cresc.*, and *ff*, along with the instruction *piu animato*.

12) Worthy is the Lamb - Glorioso ♩ = 78

Musical notation for Worthy is the Lamb in bass clef, 4/4 time, Glorioso tempo (♩ = 78). The piece features a dynamic marking of *f* and *mp*, along with accents and slurs.